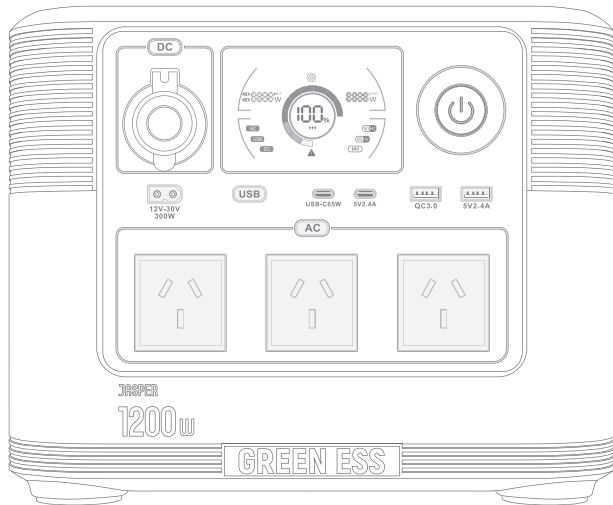


JASPER 1200
Portable Power Station



User Manual

Please read this user manual carefully before installation and use

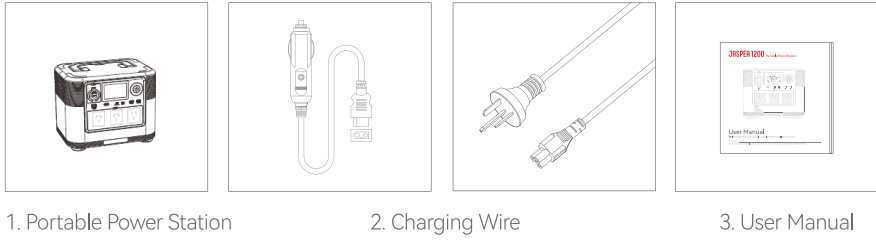
STATEMENT
Unauthorised copying and plagiarism are prohibited. This information is subject to change without notice.

Warnings And Precautions

When using this product, you should always follow the basic precautions, including:

- A. Please read all instructions before using this product.
- B. In order to reduce the risk, close supervision is required when using this product near children.
- C. The use of non-recommended or non genuine accessories with the product may cause the risk of electrocution.
- D. Please pull the power plug out of the product socket when the product is not in use.
- E. It is prohibited to dismantle the product, which may cause unpredictable risks such as fire, explosion or electric shock.
- F. Do not use damaged wires, damaged plugs or damaged output cables when using the product, this may cause electric shock.
- G. Please charge the product in a well ventilated place. Do not restrict the ventilation of the product in any way.
- H. Please put the product in a well ventilated and dry place to avoid the risk of electric shock due to water intrusion.
- I. It is prohibited to expose the product to fire or temperatures higher than 130 °C, which may lead to fire, explosion and other safety accidents.
- J. It is prohibited to use or place the product under high temperature (direct sunlight or leave in unattended car), otherwise the internal battery may overheat, catch fire or cause function failure.
- K. Please charge the product every three months to prevent the battery from being discharged.

Package Contents



Technical Parameters

Battery Capacity	Weight	Dimension	USB-C Output Port	Vehicle Charging Output Port	Solar Energy
1008WH	12KG	290*220*230mm	PD-65W*1 5V2.4*1	12.5V ~ 8A 100W	12V~30V/10A 200W (MAX)
AC Output Port	USB Output Port	Battery	Battery Cycle	Operating Temperature	Charging Temperature
230V/5.3A 50Hz/60Hz	5V/2.4A*1 12V/1.5A*1	Lithium Iron Phosphate	≈2000	0~40℃	0~40℃
Restricted Working Temperature	Protection System	Warranty	Certificate		
-10~40℃	Overcharge Protection / Over discharge Protection Over Current Protection / Over Temperature Protection Short Circuit Protection / Overvoltage Protection, Etc	1 Year	UN38.3 / MSDS RoHS / CE		

FAQ

1. Can the product be brought on the plane?

No, because this product is a lithium battery product, according to international air transportation standards, the lithium battery product cannot exceed 100Wh. Since the regulations of each airline are different, please confirm the specific requirements with your airline in advance.

2. The power of the appliance is within the rated output power range of this power station but it cannot be used?

- a.Please recharge the power station when the battery is less than 20%.
- b. The startup power of some electrical appliances is greater than its normal use power, which may cause the appliance no to work properly.

3. Why is there a slight noise while using the power station?

The product adopts an air-cooling system, and the built-in fan can help the product to dissipate heat better. It is normal to have a slight noise when using it.

4. Is it normal for the charger to heat up when charging?

It is normal for the charger to heat up during charging. The standard charger conforms to national safety standards, so you can use it with confidence!

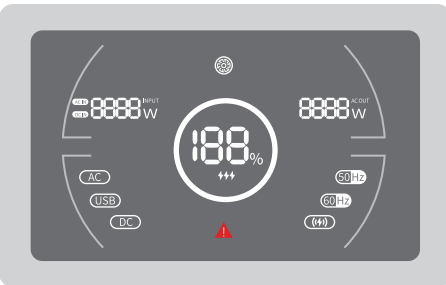
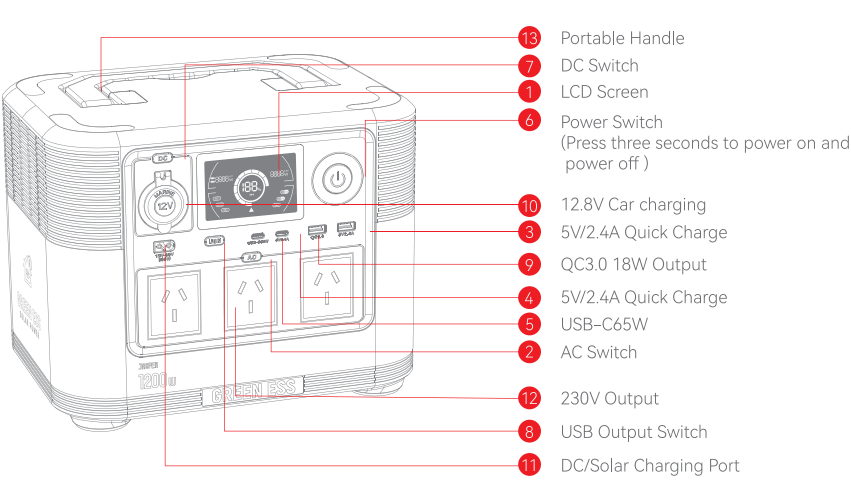
5. What to do if the power station is exhausted?

Let it rest for 30 minutes before charging to ensure the process of voltage recovery.

6. Why does the power station shut down automatically?

When using high power electrical appliance for a long time, the internal temperature of the device will rise, which will turn on the battery protection program automatically, if this happens, please turn the power station off and allow it to cool down.

Control Panel Description



LEGEND DESCRIPTION	
8888 W	Equipment failure, please restart
8888 W	AC Output Power
8888 W	Output Power(AC/DC)
50Hz	Output Frequency 50Hz
60Hz	Output Frequency 60Hz
AC	AC Indicator
USB	USB Indicator
DC	DC Indicator
Wireless	Wireless Charging Indicator
Cooling Fan	Cooling Fan Indicator

Precautions For Use

- Screen lights up for 60 seconds when pressing ④, screen will be automatically turned off after 60 seconds.
- The output port will be activated for power supply by pressing button ② ⑦ ⑧.
- When the power output port is not in use, press the button ② ⑦ ⑧ to turn it off to save power.
- Low temperature may affect the battery capacity of the product, this power station can be charged in the temperature range of 0 ~ 40 °C. Do not use the power station when the operating temperature is not met.
- Please fully charge the power station when you use it for the first time to avoid the inconvenience caused by lack of power. After this device is fully charged, the fan will continue to work for about 2 minutes after the charging power cord is unplugged, which is used to cooling the device (the specific time may vary with the screen temperature) , pay attention to prevent dust particles or foreign matter from being inhaled into the equipment, otherwise it will easily lead to internal equipment damage.
- After the discharge is terminated, the fan will continue to work to reduce the device temperature to a reasonable temperature for about 30 minutes (the time may vary with the screen temperature) .
- Ensure a secure connection between the device and the electrical appliance or charging cable. Activate the charging or discharging switches on the control panel to avoid sparks.

Charging Mode

Before using or storing the product, please use the charger to charge the product. When charging, the indicator light is blue. The LED screen will display the current charging ratio and charging power. When the LED screen shows 100% power, it means full charge. The charging process is about 6 hours. The LED screen will display the current power level.

Standard Charger
About 6 Hours

Car Charger
About 6 Hours

200W Solar Photovoltaic Panel
About 6 Hours

(The charging time is determined by the intensity of sunlight).
Support solar photovoltaic panel MPPT function charging(12~30 V)

The above data are from the laboratory. The test data may vary due to the use environment, application method and other factors, and the charging time will be different. This test data is for reference only.

Fault descriptions /Troubleshootingn /Solutions

Fault descriptions	Troubleshooting	Solutions
The Product Cannot Be Charged	1.The charger and product are not in good contact with the mains power supply (the charging indicator is not on at this time)	Check whether the charger and product are in good contact with the mains power
	2.The contact is good, but the charging indicator is not on	Check whether the charger is in good condition, please contact your local retailer if still not charging
	3.If the charging indicator light is on, but it is still not charging	Check whether the charger is in good condition, please contact your local retailer if still not charging
The Product Has No Output	1.The connection line between the equipment and the product is not plugged in properly	Make the equipment well connected with the product
	2.The output port switch is not turned on	The indicator light will be on after turn on the output switch of the port
	3.Low battery level.	Charging the product
	4. There is no output after eliminating the above 3 troubleshootings.	If the product is broken, contact the after-sales department for handling
With Device Output Interrupt	1. The nominal power or instantaneous starting power of electrical equipment is greater than the power of the product.	Select higher power energy storage products
	2. If the equipment used is short circuited, an alarm symbol will appear on the display screen, an alarm will be raised, and the product will have no output for 15 seconds.	It is not a manufacturer fault. It is recommended to replace the equipment.
	3. There is still no output power after eliminating the above 2 troubleshootings.	Please contact your local retailer for handling.

JASPER 1200
Portable Power Station

Certificate

Inspector: QC pass

Inspection date: